

81 Hubertus-Polka

1 immer betont

J. Benz, 2004

A Einleitung

ta da da da ta ta ta da da da di ta

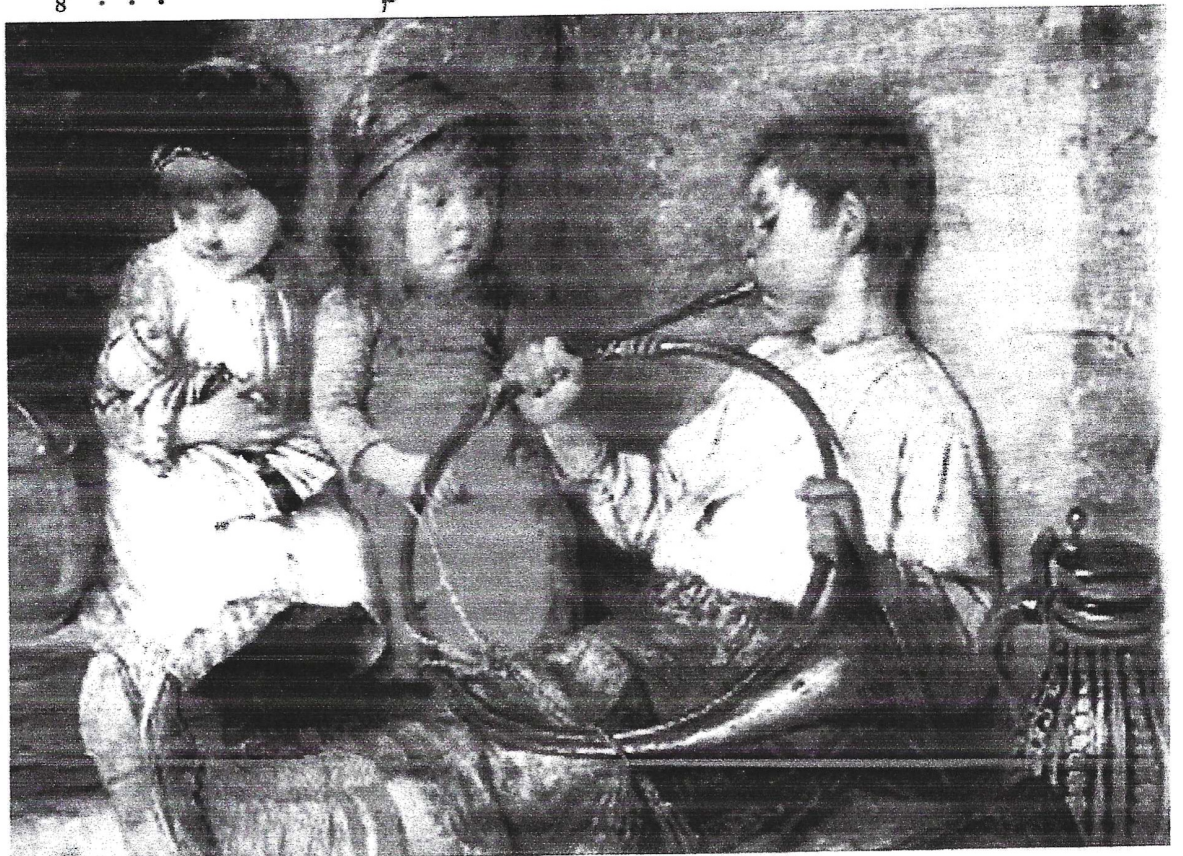
Musical score for section A, 'Einleitung'. It consists of six staves labeled I, II, III, PI, PII, and PIII. The music is in 2/4 time. The first staff (I) has vocal-like lyrics: 'ta da da da ta ta ta da da da di ta'. Below the first three staves (I, II, III) and the first three piano staves (PI, PII, PIII), there are markings '2.x rall.'. The piano parts (PI, PII, PIII) are highlighted in light blue.

B *lento* — *rallentando*

Musical score for section B, starting at measure 8. It consists of six staves labeled I, II, III, PI, PII, and PIII. The music is in 2/4 time. Above the first staff (I) is the marking '2.x rit. Fine'. Above the second staff (II) is '2.x rit.'. Above the third staff (III) is '2.x rit.'. Above the first three piano staves (PI, PII, PIII) is '2.x rit.'. The dynamic marking 'mf' is placed below the first three staves (I, II, III) and the first three piano staves (PI, PII, PIII). The marking 'cresc.' is placed below the last three staves (PI, PII, PIII). The piano parts (PI, PII, PIII) are highlighted in light blue.

16 C D.C. Teil A=Fine

The image shows a musical score for six staves, labeled I, II, III, P I, II, and II from top to bottom. The music is in 4/4 time and features a variety of rhythmic patterns and dynamics. A rehearsal mark 'C' is placed above the first measure of the first staff. Dynamics include *f* (forte), *p* (piano), and *mf* (mezzo-forte). The score concludes with a double bar line and repeat dots, followed by the instruction 'D.C. Teil A=Fine'. The fourth staff (P I) is highlighted with a light blue background.



Wilhelm von Kaulbach, 1805–1874, Ausschnitt aus Musikstudien, Galerie Weber München